

A Guide to Crafting Executive-Aligned IT Strategies

C1 @ CITE 2024



The **PURSUIT** of educational excellence
The **PROMISE** of student success
The **POWER** of “having an answer...”

*Takes the **PRIORITY** of a precision plan*



Miguel Garcia
Network Technology, Merced UHSD



Anthony Thomas
K-12 Enterprise Consultant
AThomas@OneC1.com



Dan Burgin
VP, AI Center of Excellence
DBurgin@OneC1.com




Robert Redd
VP, Systems Engineering, Public Sector
RRedd@OneC1.com

PANEL DISCUSSION





A woman with dark curly hair, wearing a light-colored blazer, is smiling and clapping her hands. She is in a classroom setting, with several other people, including children, visible in the background. The background is slightly blurred, and the overall image has a blue tint.

IT leaders are not only
supporting education—
they're shaping it

K-12 Core Tenets



Enterprise-Grade

K-12 is an enterprise-grade environment with enterprise-grade requirements.



Rapidly Evolving

Requirements are outpacing the manpower and skillsets of IT teams.

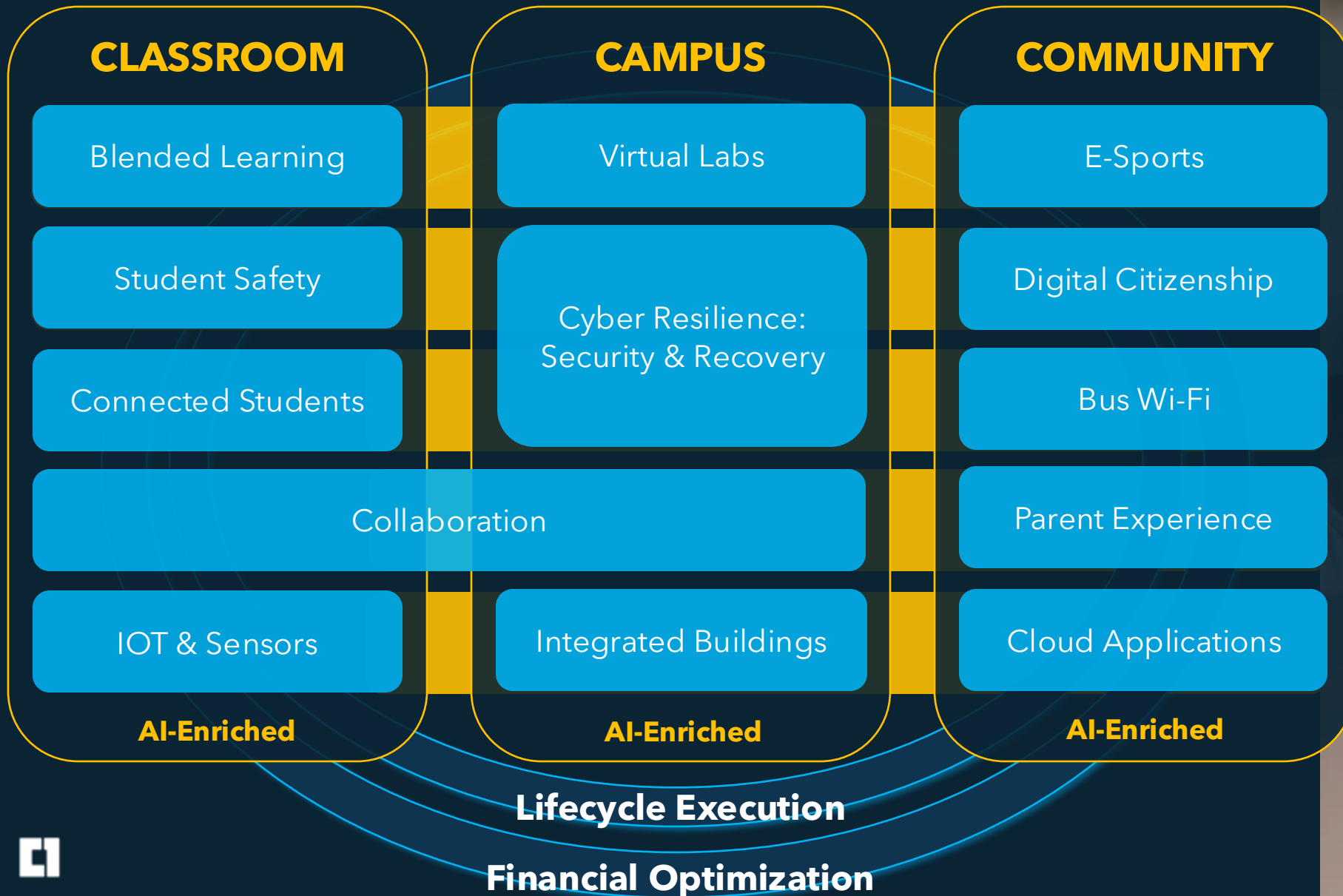


Attract & Retain

A well-executed technology strategy attracts and retains both Educators and IT Professionals.

*"Every **student deserves** a front-row seat to their education: from the classroom through the campus and into their community"*

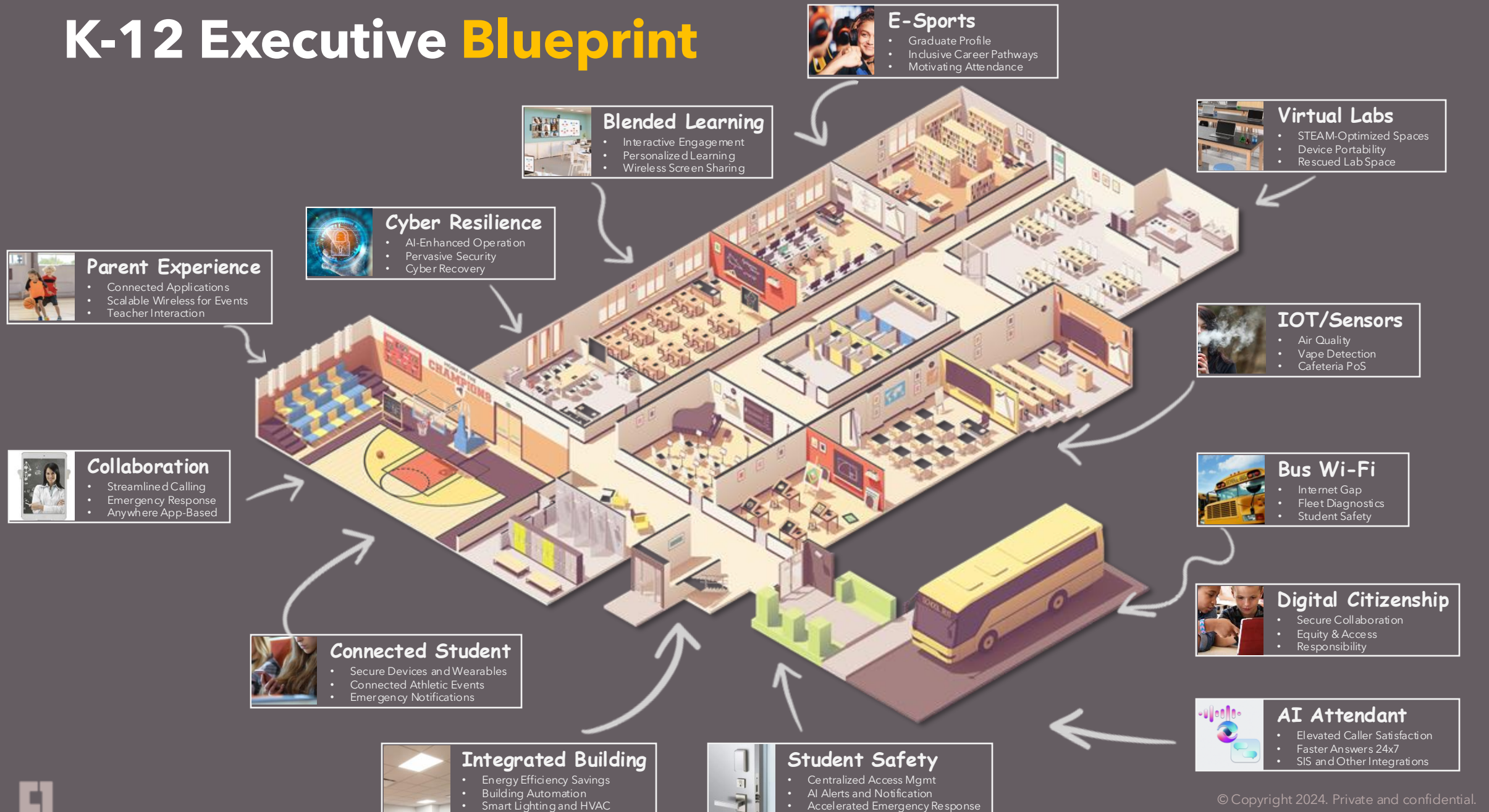
K-12 Executive Blueprint



“When educators invest in college, career, and life readiness for all individuals, **students attend and achieve at improved rates.”**



K-12 Executive Blueprint



Elevating the K-12 Connected Human Experience

Be **Bold**

Can we integrate and
implement?

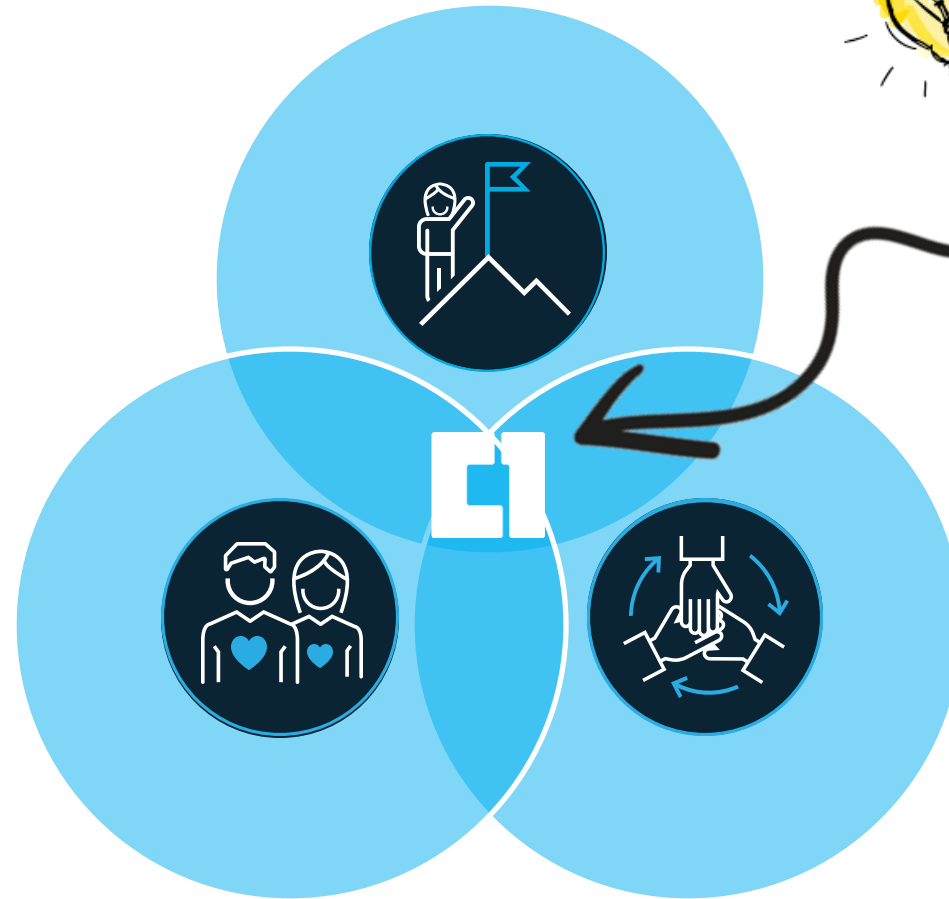


GROWTH MINDSET

Holistic problem solving
with design thinking

Be **Human**

Will students and
teachers benefit from
the solution?



Be **One**

Does this achieve the
district's vision?

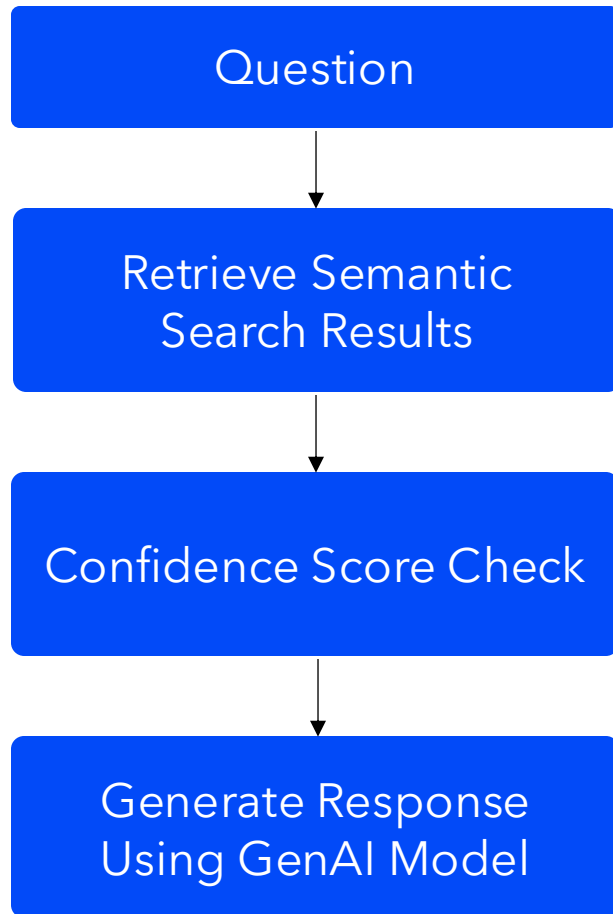


A woman in a white shirt and dark skirt stands at the front of a meeting room, holding a tablet. She is addressing a group of people seated at tables. A large screen behind her displays a line chart with multiple data series. The room has a modern, minimalist design with white walls and tables. The text "Real impact comes from **action**, not abstraction." is overlaid in white on the image.

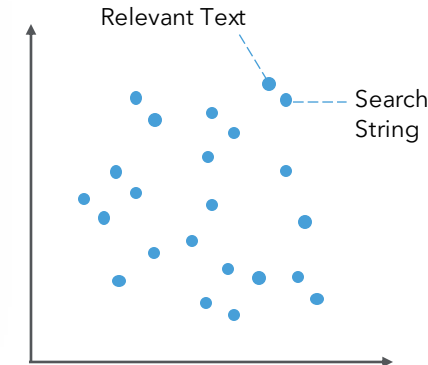
Real impact comes from
action, not abstraction.

	Students	Parents	Teachers
Administrative Student Information System (SIS): AERIES, PowerSchool, Skyward, or Infinite Campus	Schedules, attendance, signups, policies, announcements, athletics, locations	Transportation schedules, real-time bus tracking, field trip approvals, attendance, activity sign-ups, payments	Transportation schedules, Class agendas, rosters, parent and support contacts, classroom management, extracurriculars
Assistive Virtual tutoring services: Tutor.com, Paper Tools: Remind, ClassDojo, or ParentSquare	Assignments due, teacher feedback, resources, self-paced tutoring, recorded lessons	Tailored practice modules assignments and feedback, student assessment, grades, attendance, performance summary	Organize assignments, distribute resources, summary strengths and weaknesses, behavioral notes, data-rich reporting
Academic LMS: Google Classroom, Canvas, or Schoology Adaptive Learning Tools: i-Ready, Khan Academy, Dream Box, Freckle Math, Edmodo, Near Pod Targeted Intervention programs: ALEKS or Imagine Math	Assignment management, interactive assignments, discussion boards, dynamic learning	Clear student tracking, workload, curriculum progress; concept reinforcement at home	Assignment distribution, collection, and grading; student engagement mapping, communication, personalized learning

Have confidence in every answer



I think I missed my window for the fled-trip sign-up. Is it too late?



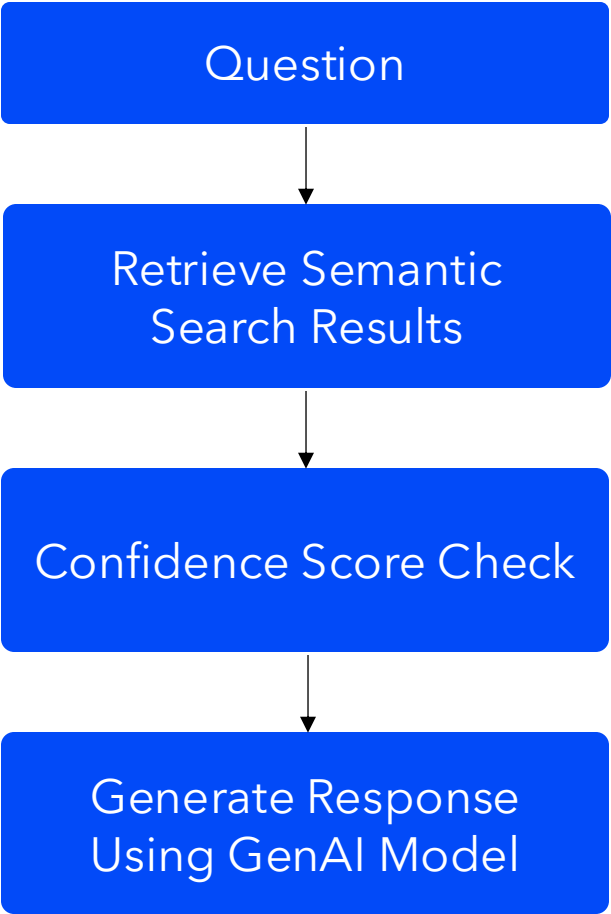
Custom LLM Prompt

Elly cannot answer: I'm sorry, I don't seem to have the answer to that question, would you like to speak with a human agent, or ask me something else?

Response flagged because handoff required



Constantly assess and improve



I think I missed my window for the fled-trip sign-up. Is it too late?

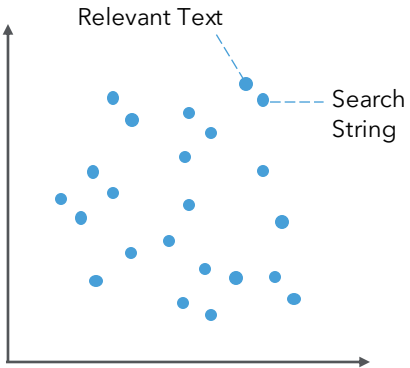
Active Promotions

Order History

Updated Return Policy

98

Elly Confidence Score



Updated Custom LLM Prompt

Elly now can answer: Based on dates of the trip, you have missed the window securing your student’s spot. Shall I place you on the wait list and notify the Ms. Brown?

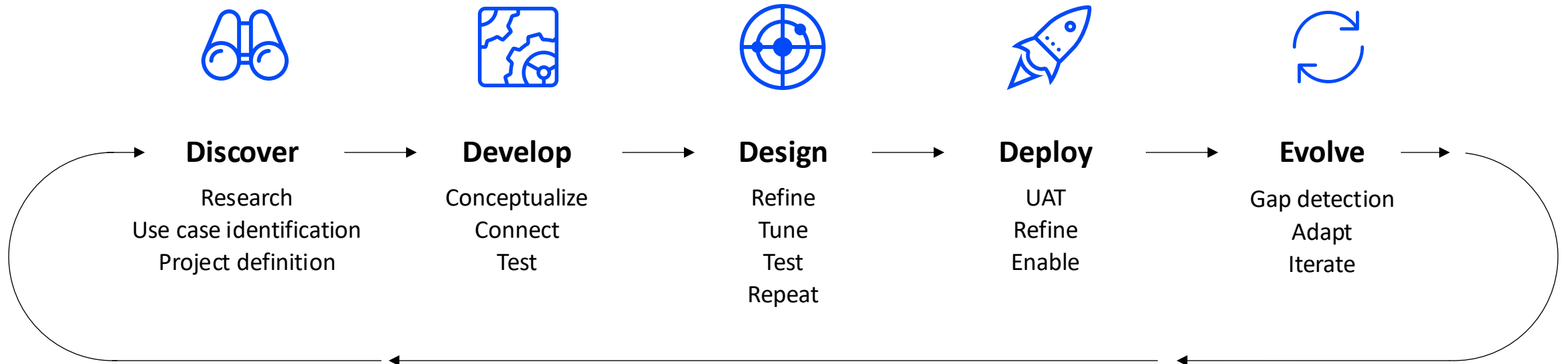


A group of San Diego Chargers football players in blue and yellow uniforms are celebrating on the field. They are in various poses, some kneeling, some standing, and some with arms raised. The background shows a large stadium filled with spectators. The text "Technology is a team sport." is overlaid in white on the image.

Technology is a team sport.

AI EXPERTISE

Continuous value improvement through deployment agility





CITE AFTER DARK

Tomorrow Night!
7:00 – 11:00 p.m.

Sign up at Booth #924



Say hello to



C 1 E L L Y

Visit Booth #924



Thank You.

